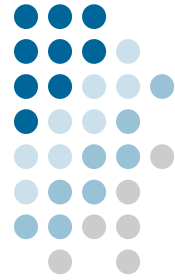




Co-funded by
the European Union



Newsletter No.1

Project description

With this project we want to develop a European quality framework that unifies the model of sheltered employment in all

the countries that make up the European Union, bringing together the positive aspects of each of the employment policies

that are currently being applied, and improving those aspects that are not working well.

The overall objective is:

- Produce a report outlining the needs and proposals for the

creation of a European quality framework for sheltered employment in Europe.

The specific objectives are:

- To know the situation of sheltered employment in the countries that form the consortium of this project.

- Sharing experiences and good practices between partner countries

- Develop tools to measure the effectiveness of different models of sheltered

employment.

- Raise awareness and promote the improvement of employment conditions for people with disabilities.

- Describe the most appropriate sheltered employment models according to the type of disability.

- To seek the involvement and collaboration of the Public Administrations and the business sector in the quality integration of people with disabilities.

Project activity- Satisfaction survey

This activity aims to create an evaluation tool about the quality of sheltered employment currently in the partner countries of this project, which will be filled in by the people with disabilities who currently work in special employment centres and which will include a

section to be filled in by the employers who manage these types of jobs. This tool will be a survey which will take into account all the aspects involved in the integration of people with disabilities outside ordinary employment such as: salary, working hours, type of contract, adaptation to the job,

human resources management of the specific sheltered employment companies, degree of satisfaction of the workers and on the other hand, profile of the employers who manage the special employment centres, entities by type of disability etc...



Report to establish a European Quality Framework for Protected Employment

The report will seek to establish a European quality framework for sheltered employment and its main content will focus on

1. To present the data on sheltered employment in Europe today in a statistical way, with the corresponding interpretation of the data.

2. Publicise the feelings and real situations that people with disabilities experience in accessing the labour

market.

3. To highlight the positive aspects of the sheltered employment models used in each of the member countries of this

consortium.

4. To look for models from other European countries that can enrich this report.

5. Proposals for improvement and recommendations for entrepreneurs in the sector.

6. Request to the competent bodies to take this model proposal to the appropriate legislative bodies

Multiplier event

This activity will be carried out simultaneously in the 3 member countries of this consortium. The date set for the event is in June 2024, with a planned duration of approximately 2 hours. About 15 relevant people from the local political life, representatives of disabled people's organisations, associations of special employment centres and

other agents that can support this initiative will be invited.

During the event we will present the data collected on sheltered employment in Europe, we will present the similarities

and differences between some countries and others, and we will make public the Report with the proposals

that we consider appropriate for a change at European level and promoting the creation of a European Quality Framework for sheltered employment.

Record Sheet and Comparison Chart

This activity begins with the elaboration of a registration sheet where all the items that we want to measure will be collected in order to know the current situation of the model used in each of the member countries of the consortium. All the partners will be involved in the preparation of the document in order to make it as

complete as possible and to take into account all the variables and characteristics of each country.

With this tool, a research phase will begin in which we must collect the necessary data to fill in the registration form. This research will lead us to contact the staff responsible for the special

employment centres, consult documents and laws where

this employment model is legislated, politicians and staff of the Public Administrations etc...

Meeting in Split 26-27 February 2024

The partner coordinating the project (Formación Inclusiva S.L.) makes a presentation in order to review the project: deadlines, documents, results, evaluation, dissemination, and to contextualise the participants.

3. The Romanian partner, leader of activity no. 2, makes an analysis of the Record Sheet and comparative table, in order to reflect together on the

different models of sheltered employment in each of our countries, and in the rest of Europe.

With regard to activity no. 3, The proposed report on the new model of sheltered employment in Europe, the coordinating partner responsible for this activity presents a conceptual map of the Spanish model of sheltered employment, and proposes that the other partners do the same, in order to have a clear and

summarised vision that will serve as a guide for the drafting of the report.

4. The review of the evaluation of Activity 1 is carried out. AJOFM, responsible for quality, analyses the responses and the conclusions reached after the evaluation, with very satisfactory results.

5. We set out the actions to disseminate both the activities and the results of the project. Currently, publications have been made on Instagram and Facebook, created for this project, and we value the possibility that each partner is responsible for creating content to give greater visibility to the results of the

activities that we are carrying out. AJOFM proposes to create a newsletter that will be carried out in the coming weeks.

6. CABPS makes a presentation with the data obtained in Activity 2. Satisfaction survey of people with disabilities who are currently working. Waiting

for some more answers from the Croatian partner, we postpone until the 8th the closing of this activity, although it makes a presentation of the data obtained in Romania and Spain.





+3466770085 Granada.Andalusia.Spain

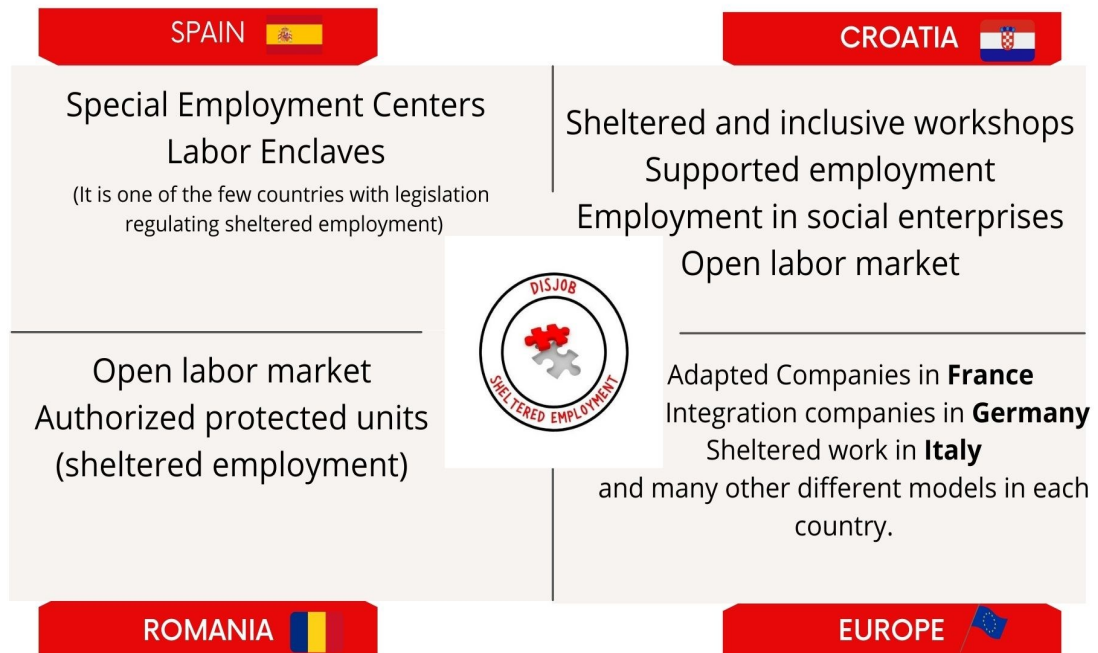


Co-funded by
the European Union

labrujula@formacioninclusiva.es

@labrujulaformacioninclusiva

Models of sheltered employment



Erasmus+



Co-funded by
the European Union